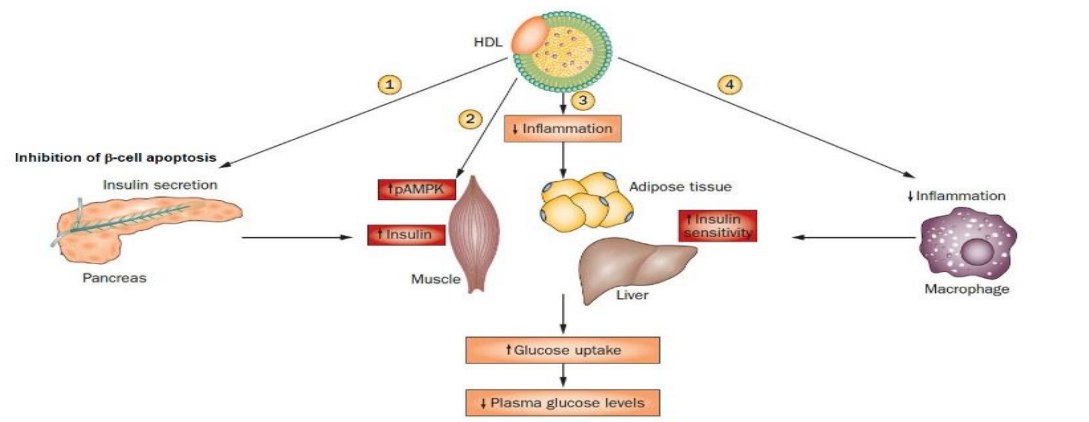


High Density Lipoprotein inhibits ER-stress induced apoptosis of pancreatic beta cells by interaction via Smoothed

Mustafa Yalcinkaya¹, Anja Kerksiek², Kathrin Gebert¹, Wijtske Annema¹, Silvija Radosavljevic¹, Dieter Lütjohann², Lucia Rohrer¹, and Arnold von Eckardstein¹\$.

1. Institute of Clinical Chemistry, University and University Hospital of Zurich, Switzerland
2. Institute of Clinical Chemistry & Laboratory Medicine, Medical University of Bonn, Germany



Drew et al. Nature Reviews Endocrinology 2012

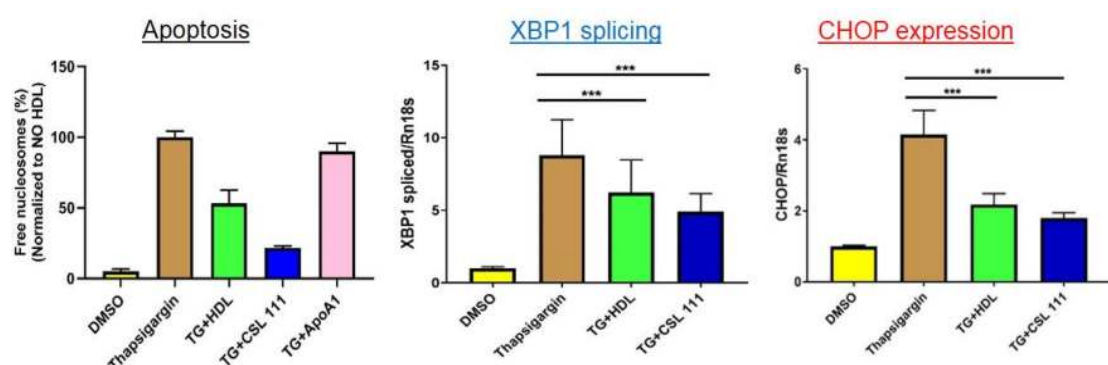


Figure 1: HDL and CSL111 decrease cell death and ER stress in INS1E cells

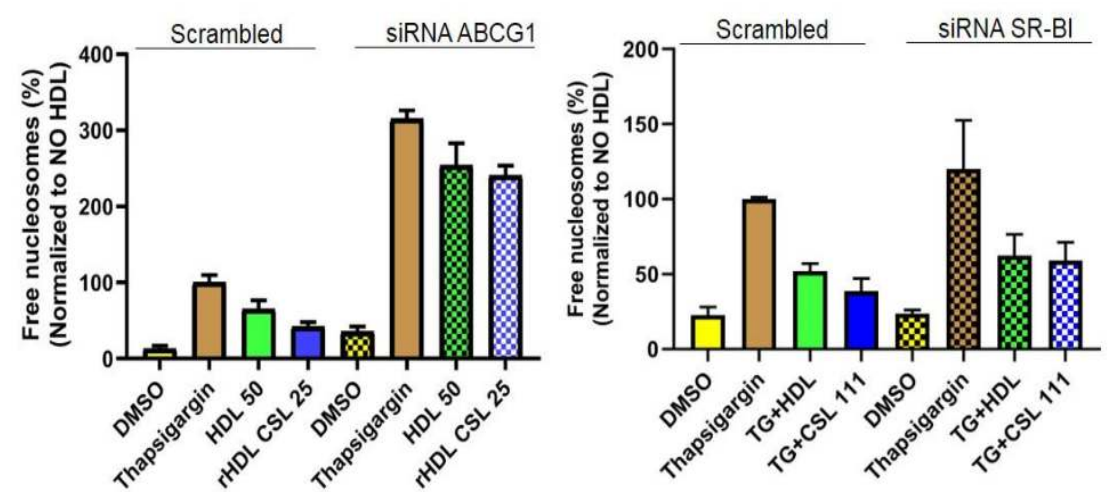


Figure 2: Knock-down of ABCG1, not SR-BI, prevents the HDL-mediated inhibition of TG-induced apoptosis

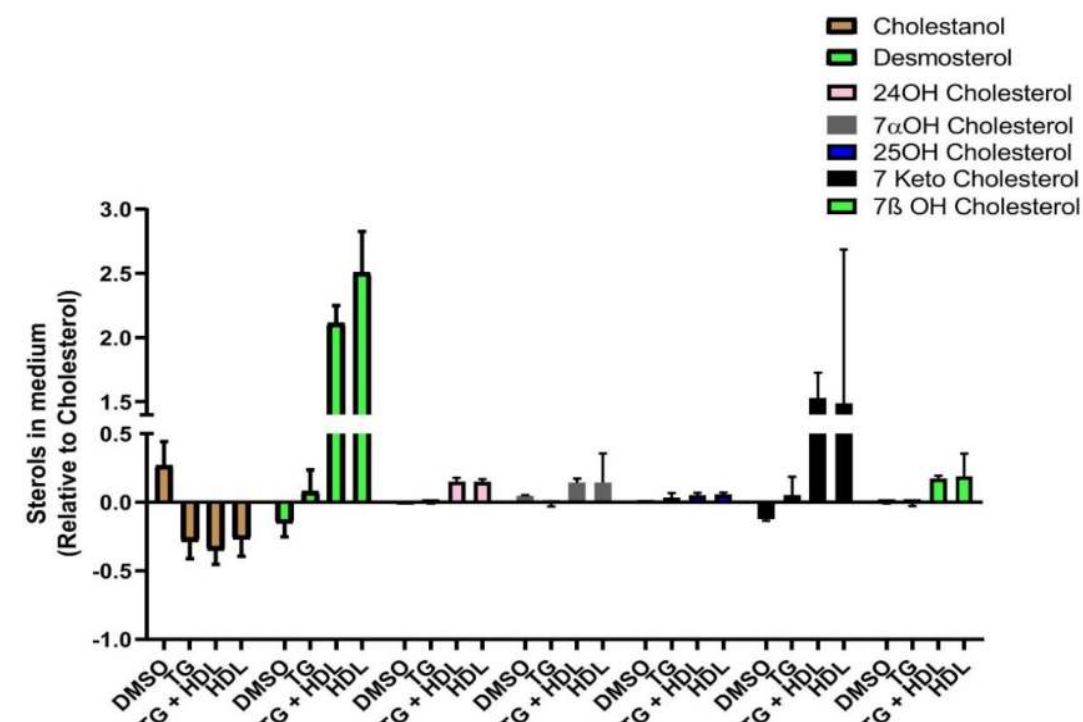


Figure 3: Sterols are differentially effluxed by HDL from INS1e beta cells

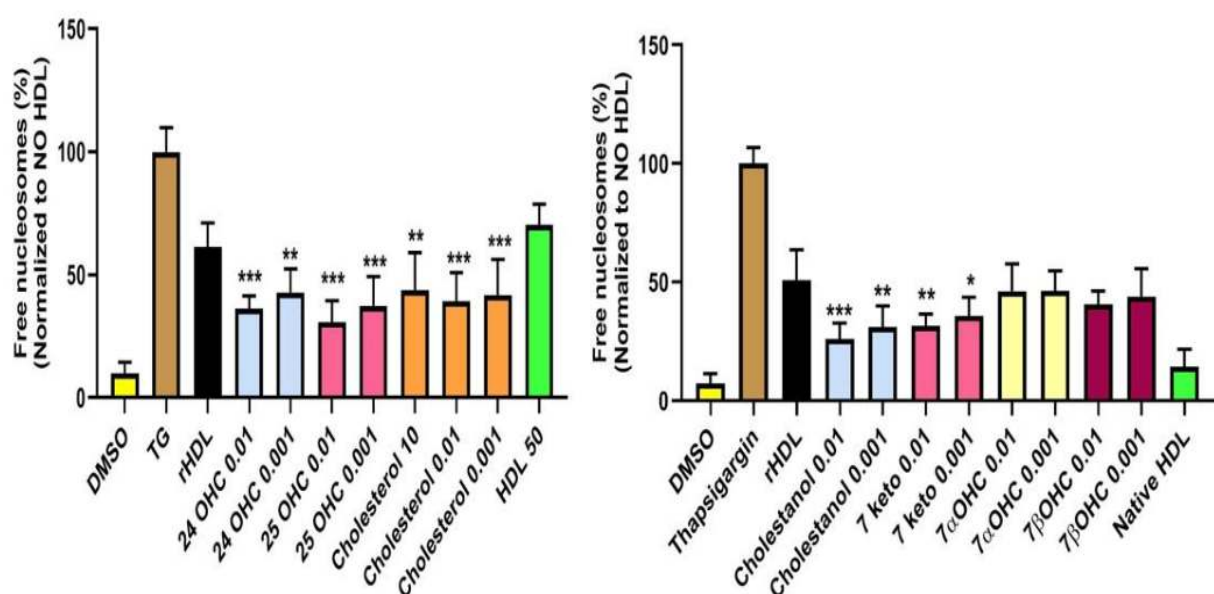


Figure 4: Supplementation with oxysterols enhances inhibition of beta cell apoptosis by rHDL

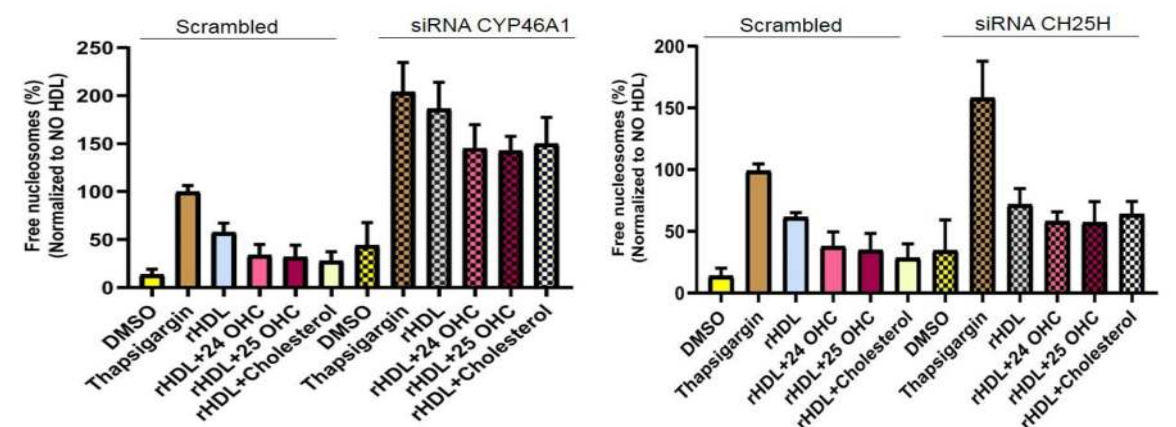


Figure 5: Apoptosis induction upon oxysterol synthesizing CYP enzymes partially rescued by oxysterol and cholesterol supplementation

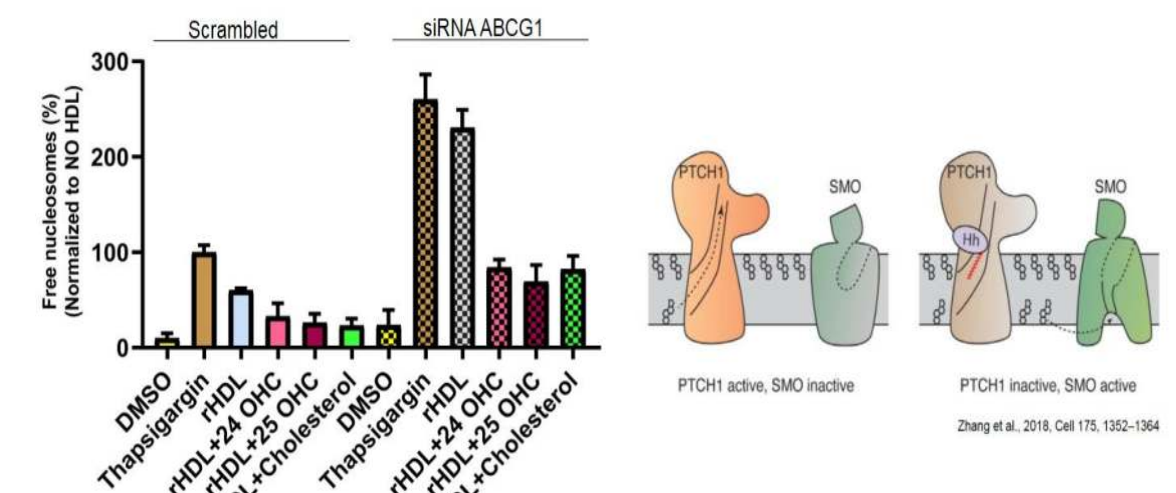


Figure 6: Knock-down of ABCG1 prevents the HDL-mediated inhibition of TG-induced apoptosis and rescued by oxysterol and cholesterol supplementation

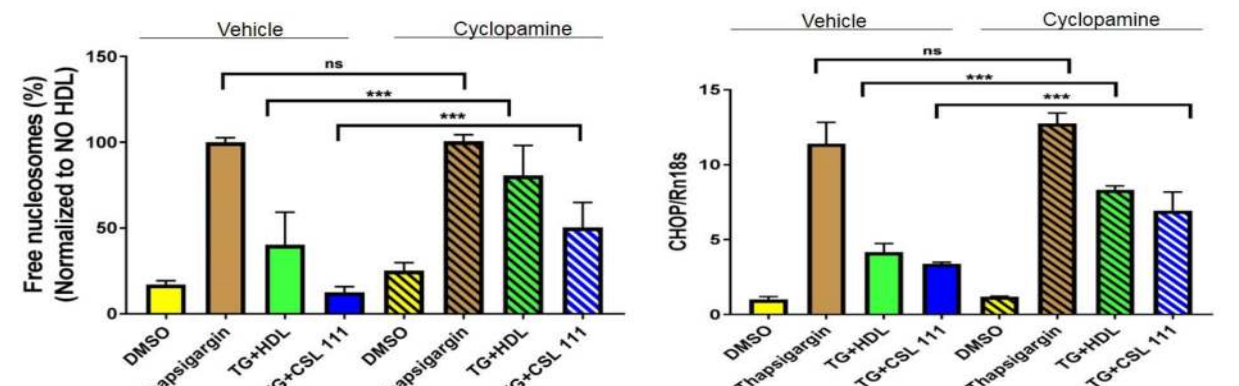


Figure 7: Inhibitory activity of HDL on TG-induced ER stress and apoptosis is abolished upon inhibition of Smoothed by Cyclopamine

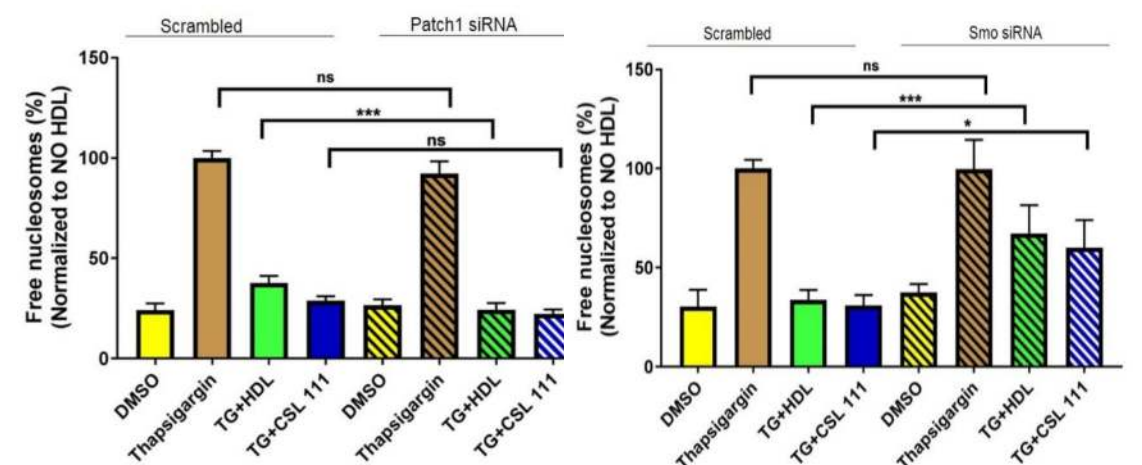


Figure 8: HDL's anti-apoptotic activity is diminished by silencing of Smoothed but not Indian Hedgehog or Patched1

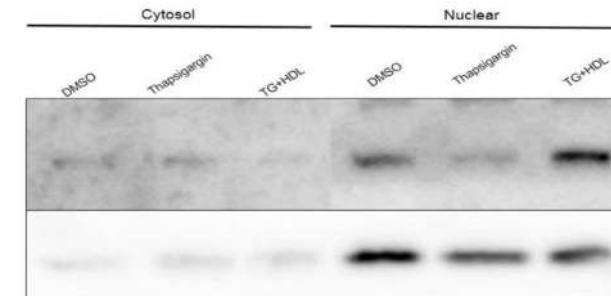


Figure 9: Nuclear GLI1 translocation is inhibited by treatment and restored by HDL

